

**SOCIETÀ GENERALE RICAMBI (Europa) p.A.**

**postatarget**  
catalog

CN/D00855/2008

Posteitaliane

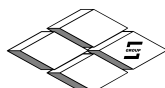
FASCICOLO 11/C EDIZIONE 2009

**CATALOGO**

# **PNEUMATICI**

**SCOOTER - CICLOMOTORI - MOTOCARRI  
MINIMOTO - MOTOCROSS - KART**

**Sava**™



**Vee Rubber**

**SOCIETÀ GENERALE RICAMBI (EUROPA) p.A**

**MAGAZZINO DI BOLOGNA:** 40012 CALDERARA DI RENO · Via Armaroli 10/12 · Tel: +39.051722557 · Fax: +39.051720376  
**MAGAZZINO DI MILANO:** 20129 MILANO · Via Pasquale Sottocorno 52 · Tel: +39.027382368 - 0276110273 · Fax: +39.0270106598  
<http://www.sgr-it.com> · e-mail: [infosgr@sgr-it.com](mailto:infosgr@sgr-it.com)

Tutti gli articoli del presente catalogo si intendono adattabili (quando non indicati come di primo equipaggiamento)

La riproduzione anche parziale del catalogo o dei ns. disegni originali è vietata e sarà perseguita ai sensi della legge. Le condizioni generali di vendita sono riportate sul nostro listino prezzi



## Indice




Pneumatici scooter - maxi scooter - ciclomotori - motocarri . . . . .	3
Pneumatici mini moto strada/pista . . . . .	10
Pneumatici moto cross - mini cross - enduro - trial . . . . .	10
Pneumatici e camere d'aria per kart. . . . .	13
<i>Pneumatici</i> . . . . .	13
<i>Camere d'aria</i> . . . . .	13
Kit di emergenza e accessori . . . . .	13
Camere d'aria per pneumatici scooter - moto cross - ciclomotori - motocarri . . . . .	14
Tabella misure pneumatici . . . . .	15
<i>Pneumatici scooter - mini moto - ciclomotori - motocarri</i> . . . . .	15
<i>Pneumatici moto cross - mini cross - trial - enduro on/off road</i> . . . . .	17
<i>Pneumatici kart</i> . . . . .	18
Indicazioni presenti sul pneumatico . . . . .	19
Note tecniche pneumatici. . . . .	20

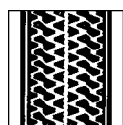


## Pneumatici scooter - maxi scooter - ciclomotori - motocarri

Pneumatici tipo standard e rinforzato, tipo racing, tipo sport e pneumatici a fascia bianca





1. Pneumatici Vee Rubber e Sava standard e rinforzati: per scooter, maxiscoter, moto stradali 50 cc., ciclomotori e motocarri, disegno classico del battistrada, buona tenuta su qualsiasi fondo stradale e lunga percorrenza chilometrica.
2. Pneumatici Sava racing soft: per scooter ad alte prestazioni, si contraddistinguono per l'ottima tenuta e stabilità alle alte velocità e consentono pieghe eccezionali in massima sicurezza. Sono consigliati per asfalti lisci alle alte e basse temperature. In caso di asfalto bagnato si consiglia l'utilizzo solo alle basse temperature.  
Pneumatici Sava racing medium (disponibili su richiesta): consigliati per asfalti ruvidi. In caso di asfalto bagnato si consiglia l'utilizzo solo alle alte temperature.
3. Pneumatici Sava sporty 3+: per scooter e maxiscoter, ad elevato grip e stabilità, sono dotati di una "freccia" fosforescente laterale che garantisce la luminescenza al buio e quindi la visibilità laterale notturna.
4. Pneumatici Sava Maxima per scooter di piccola e media cilindrata.
5. Pneumatici Sava a fascia bianca: destinati a Vespe, ciclomotori e scooter in stile classico/retrò, pongono l'accento sulla personalizzazione mantenendo inalterate le ottime caratteristiche di sicurezza e qualità.

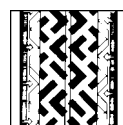
**11.1090** 3.00 - 10 TT 42 J - VR   
**11.1100** 3.50 - 10 TT 56 J - VR   
**11.1093** 100/90 - 10 TT 56 P - VR 



CT 054





**11.1065** 80/80 - 14 TT 43 J - VR   
**11.1000** 2<sup>1</sup>/<sub>4</sub> - 16 TT 38 J - VR   
**11.1010** 2<sup>1</sup>/<sub>2</sub> - 16 TT 42 J - VR   
**11.1040** 2.00 - 17 TT 33 J - VR 



CT 087





**11.1029** 3.00 - 12 TT 43 J - VR   
**11.1020** 2<sup>3</sup>/<sub>4</sub> - 16 TT 43 J - VR 



CT 094






**11.1033** 2.75/80 - 16 TT/TL 43 J - VR   
**11.1032** 3.25/80 - 16 TT/TL 56 J - VR 



CT 097




**11.1011** 2<sup>1</sup>/<sub>2</sub> - 16 TT 42 J - VR   
**11.1021** 2<sup>3</sup>/<sub>4</sub> - 16 TT 43 J - VR   
**11.1051** 2<sup>1</sup>/<sub>4</sub> - 17 TT/TL 39 J - VR 



CT 099



**11.1270** 2.75 - 14 TT 43 J - VR 



CT 100 F



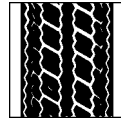
11.1271 3.00 - 14 TT 56 J - VR



CT 100 R



11.1080 3.50 - 8 TT 45 J - VR



CT 108



11.1133 120/90 - 10 TL 56 J - VR

11.1143 130/90 - 10 TL 61 J - VR

11.1152 130/60 - 13 TL 55 J - VR



CT 119 B



11.1295 130/60 - 13 TL 60 P - VR

CT 119 C



11.1161 120/90 - 10 TL 56 J - VR

11.1162 130/90 - 10 TL 61 J - VR

11.1154 130/60 - 13 TL 55 J - VR



CT 133



11.1119 90/90 - 10 TL 50 J - VR

11.1118 100/90 - 10 TL 56 L - VR

11.1122 130/70 - 10 TL 62 J - VR

11.1123 100/80 - 10 TL 56 J - VR

11.1125 120/70 - 11 TL 50 L - VR

11.1134 130/70 - 11 TL 60 L - VR

11.1126 130/70 - 12 TL 62 L - VR

11.1129 120/70 - 12 TL 51 L - VR



CT 134



11.1200 120/90 - 10 TL 66 M - VR

11.1201 130/90 - 10 TL 66 M - VR



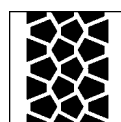
CT 137



11.1251 4.00 - 10 rinforzato 6 PR TT 74 J - VR

11.1250 4.50 - 10 rinforzato 6 PR TT 76 J - VR

11.1252 4.00 - 12 rinforzato 6 PR TT 77 J - VR

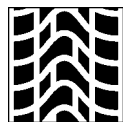


CT 138





11.1190 100/90 - 10 rinforzato 4 PR TT 61 J - VR



CT 139



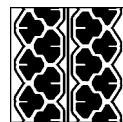
11.1210 100/80 - 10 TL 56 L - VR

11.1211 120/70 - 10 TL 54 L - VR

11.1222 110/80 - 14 TL 59 J - VR

11.1214 80/80 - 16 TL 46 J - VR

11.1213 90/80 - 16 TL 52 J - VR



CT 144



11.1155 110/70 - 12 TL 47 L - VR

11.1135 120/70 - 12 TL 51 S - VR

11.1158 130/70 - 12 TL 56 S - VR

CT 155



11.1138 130/70 - 12 TL 61 L - VR

11.1140 130/60 - 13 TL 61 L - VR

CT 184



11.1290 100/80 - 10 TL 56 L - VR

11.1291 120/70 - 10 TL 54 L - VR

CT 217



11.1275 3.50 - 10 (100/90 - 10) TT 51 J - VR

CT 219



11.1283 110/70 - 16 TL 52 S - VR

11.1284 140/70 - 16 TL 65 S - VR

11.1280 100/80 - 16 TL 50 T - VR

11.1282 120/80 - 16 TL 60 S - VR

11.1281 130/80 - 16 TL 64 T - VR


CT 224




11.51040 2<sup>1</sup>/<sub>4</sub> - 18 TT rinforzato 42 J - SA 



B 4


11.5408018 3.50 - 8 4PR TT 46 J - SA 


11.5408028 4.00 - 8 4PR TT 66 J - SA 



B 13 fascia bianca


11.510800 3.50 - 8 TT 46 J - SA 

11.5400802 4.00 - 8 4PR TT 66 J - SA 

11.5400803 4.00 - 8 6PR TT 71 J - SA 




B 13

11.5110008 3.50 - 10 TT 51 J - SA 



B 14 fascia bianca

11.511000 3.50 - 10 TT 51 J - SA 

11.5110005 3.50 - 10 rinforzato TT 59 J - SA 

11.5125102 4.00 - 10 4PR TT 69 J - SA 




B 14

11.51011 2<sup>1</sup>/<sub>2</sub> - 16 TL/TT rinforzato 42 J - SA 

11.510211 2<sup>3</sup>/<sub>4</sub> - 16 TL/TT rinforzato 46 J - SA 




MC 2

11.5112810 90/90 - 16 TL/TT 48 P - SA 




MC 4


11.510290 3.00 - 12 TT 47 J - SA 



MC 5


11.511231 100/80 - 10 TL 56 J - SA 

11.511241 110/80 - 10 TL 61 J - SA 

11.511271 100/90 - 10 TL 56 J - SA 




MC 6

11.5105 110/90 - 16 TT 59 P - SA 



MC 7

11.511181 100/90 - 10 TL 56 J - SA 



MC 9

11.510201 2<sup>3</sup>/<sub>4</sub> - 16 TL/TT rinforzato 46 J - SA 



MC 10

11.5109118 3.00 - 10 TL 42 J - SA 



MC 12 fascia bianca

11.510911 3.00 - 10 TL 42 J - SA 



MC 12

11.511191 90/90 - 10 TL 50 J - SA 




MC 13

11.511331 120/90 - 10 TL 56 J - SA 



MC 14


11.511431 130/90 - 10 TL 61 J - SA 




MC 15


11.5101 110/90 - 12 TL 64 L - SA 


11.5113714 120/70 - 12 tipo "racing soft" TL 58 P - SA 


11.5113715 120/70 - 12 rinforzato TL 58 P - SA 

11.511381 130/70 - 12 TL 56 L - SA 

11.5113815 130/70 - 12 rinforzato TL 62 P - SA 

11.5114515 140/70 - 12 rinforzato TL 65 P - SA 


11.511505 120/70 - 13 rinforzato TL 60 P - SA 


11.5115215 130/60 - 13 rinforzato TL 60 P - SA 


11.511551 140/60 - 13 TL 57 L - SA 



MC 16

11.512001 120/90 - 10 TL 56 J - SA 


11.512011 130/90 - 10 TL 61 J - SA 

11.51202 150/80 - 10 TL 65 L - SA 




MC 17

11.511011 3.50 - 10 TL 51 J - SA 

11.5110116 3.50 - 10 tipo "racing soft" TL 51 P - SA 


11.511015 3.50 - 10 rinforzato TL 51 P - SA 


11.51120 90/80 - 17 TL 46 P - SA 


11.51131 110/80 - 17 TL 57 P - SA 




MC 18


11.5110016 3.50 - 10 tipo "racing soft" (asfalto bagnato) TL 51 P - SA 


11.51851 120/70 - 10 rinforzato TL 54 L - SA 


11.529404 120/90 - 10 TL 57 L - SA 

11.51855 130/90 - 10 TL 61 L - SA 

11.51839 110/70 - 11 TL 45 L - SA 


11.5113711 120/70 - 12 TL rinforzato 58 P - SA 


11.5113816 130/70 - 12 rinforzato TL 62 P - SA 

11.5115415 130/60 - 13 rinforzato TL 60 P - SA 



MC 20 "Monsum"

11.5912 100/80 - 10 TL 53 L - SA 

11.5907 120/70 - 10 rinforzato TL 54 L - SA 



MC 22 "Elegance"  
fascia bianca

11.511141 100/80 - 10 TL 53 L - SA 

11.5121115 120/70 - 10 rinforzato TL 54 L - SA 



MC 22 "Elegance"



<b>11.5156</b>	130/70 - 10 <u>rinforzato</u> TL 59 P - SA	<b>11.51282</b>	120/80 - 16 TL 60 S - SA
<b>11.5157</b>	120/70 - 12 <u>rinforzato</u> TL 58 P - SA	<b>11.51281</b>	130/80 - 16 TL 64 P - SA
<b>11.51280</b>	100/80 - 16 TL 50 P - SA	<b>11.5108</b>	130/70 - 17 TL 62 R - SA



## MC 25 "Bogart"

<b>11.51211</b>	80/80 - 14 <u>rinforzato</u> TL 53 L - SA	<b>11.51214</b>	80/80 - 16 <u>rinforzato</u> TL 46 M - SA
<b>11.5222</b>	110/80 - 14 <u>rinforzato</u> TL 59 M - SA	<b>11.51213</b>	90/80 - 16 <u>rinforzato</u> TL 52 M - SA



## MC 26 "Capri"

<b>11.51951</b>	130/70 - 12 <u>rinforzato</u> TL 62 P - SA	<b>11.5208</b>	150/70 - 14 TL 66 S - SA
<b>11.5216</b>	140/60 - 13 <u>rinforzato</u> TL 63 P - SA	<b>11.5204</b>	120/80 - 14 TL 58 S - SA
<b>11.5202</b>	130/70 - 13 <u>rinforzato</u> TL 63 P - SA	<b>11.5210</b>	120/70 - 15 TL 56 S - SA
<b>11.5203</b>	150/70 - 13 TL 64 S - SA	<b>11.5212</b>	130/80 - 15 <u>rinforzato</u> TL 63 P - SA
<b>11.5201</b>	110/90 - 13 TL 56 P - SA	<b>11.51283</b>	110/70 - 16 TL 52 P - SA
<b>11.5206</b>	140/60 - 14 <u>rinforzato</u> TL 64 S - SA	<b>11.51286</b>	110/70 - 16 TL 52 S - SA
<b>11.5205</b>	120/70 - 14 TL 55 P - SA	<b>11.51285</b>	130/70 - 16 TL 61 P - SA
<b>11.5218</b>	120/70 - 14 TL 55 S - SA	<b>11.51284</b>	140/70 - 16 TL 65 S - SA
<b>11.5214</b>	140/70 - 14 <u>rinforzato</u> TL 68 P - SA		



## MC 28 "Diamond S"

<b>11.5290</b>	120/90 - 10 TL 57 L - SA
<b>11.5291</b>	130/90 - 10 TL 61 L - SA
<b>11.5293</b>	120/70 - 12 <u>rinforzato</u> TL 58 P - SA
<b>11.5294</b>	130/70 - 12 <u>rinforzato</u> TL 62 P - SA
<b>11.5295</b>	140/70 - 12 <u>rinforzato</u> TL 65 P - SA
<b>11.5296</b>	130/60 - 13 <u>rinforzato</u> TL 60 P - SA
<b>11.5297</b>	140/60 - 13 <u>rinforzato</u> TL 63 P - SA

CON "FRECCIA FLUORESCENTE"



## MC 29 "Sporty 3+"

11.529687 100/90 - 12 racing soft TL 49 P - SA ㊦

11.529688 120/80 - 12 racing soft TL 55 P - SA ㊦



MC 31 S "Racer"

11.51133 120/90 - 10 TL 57 L - SA ㊦

11.51143 130/90 - 10 TL 61 L - SA ㊦

11.51129 120/70 - 12 TL 51 L - SA ㊦

11.51158 130/70 - 12 TL 56 L - SA ㊦

11.51152 130/60 - 13 TL 53 L - SA ㊦



Maxima

## Pneumatici mini moto strada/pista

11.1238 90/80 - 5 TT - VR ㊦



CT 197

11.1503 90/65R - 6.5 TL - H noleggio - VR ㊦

11.1504 110/50R - 6.5 TL - H noleggio - VR ㊦

11.1510 90/65R - 6.5 TL - S racing soft - VR ㊦

11.1511 110/50R - 6.5 TL - S racing soft - VR ㊦



CT 266

## Pneumatici moto cross - mini cross - enduro - trial

Pneumatici tipo off-road cross/enduro/trial/minicross.

Pneumatici enduro tipo on/off road.

Pneumatici off-road cross/enduro/trial/minicross per terreni duri o fangosi, offrono ottime prestazioni e si contraddistinguono per il grip eccezionale, per l'elasticità, per la tenuta e per la lunga percorrenza chilometrica.

Pneumatici on/off road, per strade sterrate o asfaltate, offrono un grande comfort e una lunga percorrenza chilometrica mantenendo inalterate le ottime caratteristiche di tenuta e qualità.

11.1233 3.25 - 18 TT 59 R off road/trial - VR ㊦



CT 021

11.1163 3.00 - 21 (90/90 - 21) 6 PR TT 51 R off road/cross - VR ㊦



CT 109 F  
medium terrain

11.1172 3.50 - 18 6 PR TT 62 P off road/cross - VR ㊦

11.1173 4.00 - 18 (110/90 - 18) 6 PR TT 64 P off road/cross - VR ㊦

11.1183 4.50 - 18 (120/90 - 18) 6 PR TT 72 P off road/cross - VR ㊦



CT 109 R  
medium terrain

11.1601 2.50 - 10 TT 33 J off road/minicross - VR ㊦

11.1615 70/100 - 17 TT 40 M off road/minicross - VR ㊦

11.1195 80/100 - 21 6 PR TT 51 M off road/cross - VR ㊦



CT 140 F  
medium/soft terrain

- 11.1605 80/100 - 12 TT 41 M off road/minicross - VR  $\Delta$
- 11.1608 80/100 - 14 TT 49 M off road/minicross - VR  $\Delta$
- 11.1612 90/100 - 16 TT 51 M off road/minicross - VR  $\Delta$
- 11.1618 70/100 - 19 TT 42 M off road/minicross - VR  $\Delta$
- 11.1192 100/100 - 18 6 PR TT 59 M off road/cross - VR  $\Delta$
- 11.1199 110/100 - 18 6 PR TT 64 M off road/cross - VR  $\Delta$
- 11.1202 120/100 - 18 6 PR TT 68 M off road/cross - VR  $\Delta$
- 11.1194 100/90 - 19 6 PR TT 57 M off road/cross - VR  $\Delta$
- 11.1203 120/90 - 19 6 PR TT 66 M off road/cross - VR  $\Delta$



**CT 140 R**  
medium/soft terrain

- 11.1193 120/90 - 18 6 PR TT 65 L off road/cross - VR  $\Delta$



**CT 147**  
hard/medium terrain

- 11.1622 3.00 - 12 TT off road/minicross - VR  $\Delta$
- 11.1625 2.50 - 14 TT off road/minicross - VR  $\Delta$
- 11.1628 2.50 - 15 TT off road/minicross - VR  $\Delta$



**CT 174**  
medium terrain

- 11.1205 140/80 - 18 6 PR TT 70 R off road/cross omologato FIM - VR  $\text{\textcircled{E}}$



**CT 175 R**  
medium terrain

- 11.1175 80/100 - 21 TT 51 M off road/cross - VR  $\Delta$



**CT 200 F**  
medium/hard terrain

- 11.1174 100/90 - 19 TT 57 M off road/cross - VR  $\Delta$
- 11.1176 110/90 - 19 TT 62 M off road/cross - VR  $\Delta$
- 11.1209 110/100 - 18 TT 64 M off road/cross - VR  $\Delta$



**CT 200 R**  
medium/hard terrain

- 11.1208 90/90 - 21 6 PR TT 54 R off road/cross/enduro omologato FIM - VR  $\text{\textcircled{E}}$



**CT 211 F**  
soft/medium terrain

- 11.1206 120/90 - 18 6 PR TT 65 R off road/cross/enduro omologato FIM - VR  $\text{\textcircled{E}}$
- 11.1207 140/80 - 18 6 PR TT 70 R off road/cross/enduro omologato FIM - VR  $\text{\textcircled{E}}$



**CT 211 R**  
soft/medium terrain

11.1640 2.50 - 10 TT 32 J off road/minicross - VR  $\Delta$

11.1642 2.50 - 12 TT 42 J off road/minicross - VR  $\Delta$



CT 270  
medium/soft terrain

11.1651 2.75 - 10 TT 37 J off road/minicross - VR  $\Delta$



CT 271  
medium/soft terrain

11.1664 60/100 - 14 TT 29 M off road/minicross - VR  $\Delta$



CT 272  
medium/soft terrain

11.1672 80/100 - 12 TT 41 M off road/minicross - VR  $\Delta$



CT 273  
medium/soft terrain

11.1684 90/100 - 14 TT 49 M off road/minicross - VR  $\Delta$



CT 300 R  
medium/soft terrain

11.512210 110/80 - 18 TT 58 P off road/cross - SA  $\Delta$

11.512230 80/90 - 21 TT 48 P off road/cross - SA  $\Delta$



MC 23

11.512200 90/90 - 21 TT 54 R on/off road - SA  $\text{\textcircled{E}}$



MC 24

11.51207 140/80 - 18 TT 70 R off road/enduro  
omologato FIM - SA  $\text{\textcircled{E}}$

11.51208 90/90 - 21 TT 54 R off road/enduro  
omologato FIM - SA  $\text{\textcircled{E}}$



MC 33



## Pneumatici e camere d'aria per kart

### Pneumatici

I pneumatici "Sava" per kart sono disponibili in 3 differenti mescole, due slick per l'utilizzo a noleggio, una intagliata per l'utilizzo racing bagnato.

Le mescole sono:

**SRE** - utilizzo noleggio, mescola medio/dura per asfalti ruvidi

**SRC** - utilizzo noleggio, mescola medio/morbida per asfalti lisci

**SRW** - utilizzo racing per asfalti bagnati, mescola supermorbida

<i>Cod. SGR</i>	<i>Misure</i>	<i>TT/TL</i>	<i>Mescola</i>	<i>Q.tà per confezione</i>
11.55456	10 x 4.50 - 5	TT	SRE - noleggio/medio dura	24
11.55606	11 x 6.00 - 5	TT	SRE - noleggio/medio dura	16
11.55716	11 x 7.10 - 5	TT	SRE - noleggio/medio dura	12
11.55455	10 x 4.50 - 5	TT	SRC - noleggio/medio morbida	24
11.55605	11 x 6.00 - 5	TT	SRC - noleggio/medio morbida	16
11.55715	11 x 7.10 - 5	TT	SRC - noleggio/medio morbida	12
11.55401	10 x 4.00 - 5	TT	SRW - racing-bagnato/supermorbida	24
11.55601	11 x 6.00 - 5	TT	SRW - racing-bagnato/supermorbida	16



### Camere d'aria

<i>Cod. SGR</i>	<i>Misure camera</i>	<i>Misure pneumatico</i>	<i>Descrizione E.T.R.T.O/DIN</i>	<i>Valvole</i>
11.55502	4.10 / 3.50 - 5	10 x 4.00 - 5 / 10 x 4.50 - 5	camera V6-01-1/7777	28G piegata 90°
11.55509	11 x 6.00 / 7.10 - 5	11 x 6.00 - 5 / 11 x 7.10 - 5	camera V1-08-1/7785	JS87 piegata 90°

### Kit di emergenza e accessori

- 11.8002 cartucce aria compressa, set 2 pz.
- 11.8100 adattatore per cartucce aria compressa V001
- 11.8851 kit riparazione completo K001 s/borsa
- 11.8852 kit riparazione completo K002 c/borsa
- 11.8856 kit riparazione "cargol microkit scooter" K006



## Camere d'aria per pneumatici scooter - moto cross ciclomotori - motocarri



Cod. SGR	Misura pneumatico	Ø cerchio
11.1300 (valvola TR 4 dritta)	2.00-2.25-2.50 (2-2 <sup>1</sup> / <sub>4</sub> -2 <sup>1</sup> / <sub>2</sub> )	16-17
11.1305 (valvola TR 4 dritta)	2.50 (2 <sup>1</sup> / <sub>2</sub> )	16
	2.75 (2 <sup>3</sup> / <sub>4</sub> )	16
	80/80	16
	90/80	16
11.1308 (valvola TR 13 dritta)	3.50	8
	4.00	8
11.1310 (valvola TR 87/JS 87 piegata)	3.00	10
	3.50	10
	100/80	10
	100/90	10
11.1313 (valvola TR/JS 87 piegata)	2.75 (2 <sup>3</sup> / <sub>4</sub> )	9
11.1315 (valvola TR 87/JS 87 piegata)	120/90	10
	130/90	10
	4.00/4.50/5.00	10
11.1320 (valvola TR 4 dritta)	2.75 (2 <sup>3</sup> / <sub>4</sub> )	14
	3.00	14
	80/80	14
	80/100	14
11.1325 (valvola TR 4 dritta)	2.75	21
	3.00	21
	80/100	21
	90/100	21
11.1330 (valvola TR 4 dritta)	4.00	18
	4.50	18
	4.75	18
	100/100	18
	120/100	18
11.1335 (valvola TR 4 dritta)	3.00	16
	3.25	16
	100/80	16
11.1340 (valvola TR 87 piegata)	130/60	13
	140/60	13
11.1345 (valvola TR 87 piegata)	3.50	8
	4.00	8

Cod. SGR	Misura pneumatico	Ø cerchio
11.1350 (valvola TR 87 piegata)	120/70	12
	130/70	12
	4.00/5.00	12
11.1360 (valvola TR 4 dritta)	3.25	18
	3.50	18
	110/80	18
11.1365 (valvola TR 4 dritta)	100/100	18
	110/100	18
	4.00/4.50	18
11.1370 (valvola TR 4 dritta)	80/100	21 H.D.
	90/90	21 H.D.
	2.75/3.00	21 H.D.
11.1371 (valvola TR 4 dritta)	100/90	19 H.D.
	110/90	19 H.D.
11.1375 (valvola TR 6 dritta)	2.50 (2 <sup>1</sup> / <sub>2</sub> )	12
	2.75 (2 <sup>3</sup> / <sub>4</sub> )	12
	80/100	12
	3.00	12
11.1380 (valvola TR 4 diritta)	2.00-2.25-2.50 (2-2 <sup>1</sup> / <sub>4</sub> -2 <sup>1</sup> / <sub>2</sub> )	19
11.1382 (valvola TR 4 diritta)	2.00-2.25-2.50 (2-2 <sup>1</sup> / <sub>4</sub> -2 <sup>1</sup> / <sub>2</sub> )	18
11.1383 (valvola TR 4 diritta)	2.75-3.00 (2 <sup>3</sup> / <sub>4</sub> -3)	19
11.1384 (valvola TR 4 diritta)	100/100	19
	120/100	19
	3.25/3.50/4.10	19
11.1385 (valvola TR 4 dritta)	4.50	17
	5.10	17
	150/60	17
	160/60	17

## Tabella misure pneumatici

<i>Diametro</i>	<i>Misura</i>	<i>Disegno battistrada</i>	<i>TT/TL</i>	<i>Car./Vel.</i>	<i>Cod. SGR</i>	<i>Pag. fig.</i>
<b>Pneumatici scooter - mini moto - ciclomotori - motocarri</b>						
5"	90/80	CT 197	TT		11.1238	10
6,5"	90/65R	CT 266 H - noleggio	TL		11.1503	10
	90/65R	CT 266 S - racing soft	TL		11.1510	10
	110/50R	CT 266 H - noleggio	TL		11.1504	10
	110/50R	CT 266 S - racing soft	TL		11.1511	10
8"	3.50	CT 108	TT	45 J	11.1080	4
	3.50	B 13	TT	46 J	11.510800	6
	3.50	B 13 fascia bianca	TT	46 J	11.5408018	6
	4.00	B 13	TT	66 J	11.5400802	6
	4.00	B 13 rinforzato	TT	71 J	11.5400803	6
	4.00	B 13 fascia bianca	TT	66 J	11.5408028	6
10"	3.00	CT 054	TT	42 J	11.1090	3
	3.00	MC 12	TL	42 J	11.510911	7
	3.00	MC 12 fascia bianca	TL	42 J	11.5109118	7
	3.50	CT 054	TT	56 J	11.1100	3
	3.50	CT 219	TT	51 J	11.1275	5
	3.50	B 14	TT	51 J	11.511000	6
	3.50	B 14 rinforzato	TT	59 J	11.5110005	6
	3.50	B 14 fascia bianca	TT	51 J	11.5110008	6
	3.50	MC 18	TL	51 J	11.511011	8
	3.50	MC 18 rinforzato	TL	51 P	11.511015	8
	3.50	MC 18 racing	TL	51 P	11.5110116	8
	3.50	MC 20 racing	TL	51 P	11.5110016	8
	4.00	CT 138	TT	74 J	11.1251	4
	4.00	B 14	TT	69 J	11.5125102	6
	4.50	CT 138	TT	76 J	11.1250	4
	120/70	CT 144	TL	54 L	11.1211	5
	120/70	CT 217	TL	54 L	11.1291	5
	120/70	MC 20 rinforzato	TL	54 L	11.51851	8
	120/70	MC 22	TL	54 L	11.5121115	8
	120/70	MC 22 fascia bianca	TL	54 L	11.5907	8
	130/70	CT 134	TL	62 J	11.1122	4
	130/70	MC 25 rinforzato	TL	59 P	11.5156	9
	100/80	CT 134	TL	56 J	11.1123	4
	100/80	CT 144	TL	56 L	11.1210	5
	100/80	CT 217	TL	56 L	11.1290	5
	100/80	MC 6	TL	56 J	11.511231	7
	100/80	MC 22	TL	53 L	11.511141	8
	100/80	MC 22 fascia bianca	TL	53 L	11.5912	8
	110/80	MC 6	TL	61 J	11.511241	7
	150/80	MC 17	TL	65 L	11.51202	8
	90/90	CT 134	TL	50 J	11.1119	4
	90/90	MC 13	TL	50 J	11.511191	7
	100/90	CT 054	TT	56 P	11.1093	3
	100/90	CT 134	TL	56 L	11.1118	4
	100/90	CT 139	TT	61 J	11.1190	5
	100/90	MC 6	TL	56 J	11.511271	7
100/90	MC 9	TL	56 J	11.511181	7	

<i>Diametro</i>	<i>Misura</i>	<i>Disegno battistrada</i>	<i>TT/TL</i>	<i>Car./Vel.</i>	<i>Cod. SGR</i>	<i>Pag. fig.</i>
	120/90	<b>CT 119 B</b>	TL	56 J	11.1133	4
	120/90	<b>CT 133</b>	TL	56 J	11.1161	4
	120/90	<b>CT 137</b>	TL	66 M	11.1200	4
	120/90	<b>MC 14</b>	TL	56 J	11.511331	7
	120/90	<b>MC 17</b>	TL	56 J	11.512001	8
	120/90	<b>MC 20</b>	TL	57 L	11.529404	8
	120/90	<b>MC 29</b>	TL	57 L	11.5290	9
	120/90	<b>MAXIMA</b>	TL	57 L	11.51133	10
	130/90	<b>CT 119 B</b>	TL	61 J	11.1143	4
	130/90	<b>CT 133</b>	TL	61 J	11.1162	4
	130/90	<b>CT 137</b>	TL	66 M	11.1201	4
	130/90	<b>MC 15</b>	TL	61 J	11.511431	8
	130/90	<b>MC 17</b>	TL	61 J	11.512011	8
	130/90	<b>MC 20</b>	TL	61 L	11.51855	8
	130/90	<b>MC 29</b>	TL	61 L	11.5291	9
	130/90	<b>MAXIMA</b>	TL	61 L	11.51143	10
11"	110/70	<b>MC 20</b>	TL	45 L	11.51839	8
	120/70	<b>CT 134</b>	TL	50 L	11.1125	4
	130/70	<b>CT 134</b>	TL	60 L	11.1134	4
12"	3.00	<b>CT 094</b>	TT	43 J	11.1029	3
	3.00	<b>MC 5</b>	TT	47 J	11.510290	6
	4.00	<b>CT 138</b>	TT	77 J	11.1252	4
	110/70	<b>CT 155</b>	TL	47 L	11.1155	5
	120/70	<b>CT 134</b>	TL	51 L	11.1129	4
	120/70	<b>CT 155</b>	TL	51 S	11.1135	5
	120/70	<b>MC 16 racing</b>	TL	58 P	11.5113714	8
	120/70	<b>MC 16 rinforzato</b>	TL	58 P	11.5113715	8
	120/70	<b>MC 20 rinforzato</b>	TL	58 P	11.5113711	8
	120/70	<b>MC 25 rinforzato</b>	TL	58 P	11.5157	9
	120/70	<b>MC 29 rinforzato</b>	TL	58 P	11.5293	9
	120/70	<b>MAXIMA</b>	TL	51 L	11.51129	10
	130/70	<b>CT 134</b>	TL	62 L	11.1126	4
	130/70	<b>CT 155</b>	TL	56 S	11.1158	5
	130/70	<b>CT 184</b>	TL	61 L	11.1138	5
	130/70	<b>MC 16</b>	TL	56 L	11.511381	8
	130/70	<b>MC 16 rinforzato</b>	TL	62 P	11.5113815	8
	130/70	<b>MC 20 rinforzato</b>	TL	62 P	11.5113816	8
	130/70	<b>MC 28 rinforzato</b>	TL	62 P	11.51951	9
	130/70	<b>MC 29 rinforzato</b>	TL	62 P	11.5294	9
	130/70	<b>MAXIMA</b>	TL	56 L	11.51158	10
	140/70	<b>MC 16 rinforzato</b>	TL	65 P	11.5114515	8
	140/70	<b>MC 29 rinforzato</b>	TL	65 P	11.5295	9
	120/80	<b>MC 31 S racing</b>	TL	55 P	11.529688	10
	100/90	<b>MC 31 S racing</b>	TL	49 P	11.529687	10
	110/90	<b>MC 16</b>	TL	64 L	11.5101	8
13"	130/60	<b>CT 119 B</b>	TL	55 J	11.1152	4
	130/60	<b>CT 119 C</b>	TL	60 P	11.1295	4
	130/60	<b>CT 133</b>	TL	55 J	11.1154	4
	130/60	<b>CT 184</b>	TL	61 L	11.1140	5
	130/60	<b>MC 16 rinforzato</b>	TL	60 P	11.5115215	8
	130/60	<b>MC 20 rinforzato</b>	TL	60 P	11.5115415	8
	130/60	<b>MC 29 rinforzato</b>	TL	60 P	11.5296	9
	130/60	<b>MAXIMA</b>	TL	53 L	11.51152	10
	140/60	<b>MC 16</b>	TL	57 L	11.511551	8
	140/60	<b>MC 28 rinforzato</b>	TL	63 P	11.5216	9
	140/60	<b>MC 29 rinforzato</b>	TL	63 P	11.5297	9
	120/70	<b>MC 16 rinforzato</b>	TL	60 P	11.511505	8
	130/70	<b>MC 28 rinforzato</b>	TL	63 P	11.5202	9
	150/70	<b>MC 28</b>	TL	64 S	11.5203	9
	110/90	<b>MC 28</b>	TL	56 P	11.5201	9



<b>Diametro</b>	<b>Misura</b>	<b>Disegno battistrada</b>	<b>TT/TL</b>	<b>Car./Vel.</b>	<b>Cod. SGR</b>	<b>Pag. fig.</b>
14"	2.75	CT 100 F	TT	43 J	11.1270	3
	3.00	CT 100 R	TT	56 J	11.1271	4
	140/60	MC 28 rinforzato	TL	64 S	11.5206	9
	120/70	MC 28	TL	55 P	11.5205	9
	120/70	MC 28 rinforzato	TL	55 S	11.5218	9
	140/70	MC 28 rinforzato	TL	68 P	11.5214	9
	150/70	MC 28	TL	66 S	11.5208	9
	80/80	CT 087	TT	43 J	11.1065	3
	80/80	MC 26 rinforzato	TL	53 L	11.51211	9
	110/80	CT 144	TL	59 J	11.1222	5
	110/80	MC 26 rinforzato	TL	59 M	11.5222	9
	120/80	MC 28	TL	58 S	11.5204	9
15"	120/70	MC 28	TL	56 S	11.5210	9
	130/80	MC 28 rinforzato	TL	63 P	11.5212	9
16"	2 1/4	CT 087	TT	38 J	11.1000	3
	2 1/2	CT 087	TT	42 J	11.1010	3
	2 1/2	CT 099	TT	42 J	11.1011	3
	2 1/2	MC 2 rinforzato	TT/TL	42 J	11.51011	6
	2 3/4	CT 094	TT	43 J	11.1020	3
	2 3/4	CT 099	TT	43 J	11.1021	3
	2 3/4	MC 2 rinforzato	TT/TL	46 J	11.510211	6
	2 3/4	MC 10 rinforzato	TT/TL	46 J	11.510201	7
	110/70	CT 224	TL	52 S	11.1283	5
	110/70	MC 28	TL	52 P	11.51283	9
	110/70	MC 28	TL	52 S	11.51286	9
	130/70	MC 28	TL	61 P	11.51285	9
	140/70	CT 224	TL	65 S	11.1284	5
	140/70	MC 28	TL	65 S	11.51284	9
	2.75/80	CT 097	TT/TL	43 J	11.1033	3
	3.25/80	CT 097	TT/TL	56 J	11.1032	3
	80/80	CT 144	TL	46 J	11.1214	5
	80/80	MC 26 rinforzato	TL	46 M	11.51214	9
	90/80	CT 144	TL	52 J	11.1213	5
	90/80	MC 26 rinforzato	TL	52 M	11.51213	9
	100/80	CT 224	TL	50 T	11.1280	5
	100/80	MC 25	TL	50 P	11.51280	9
	120/80	CT 224	TL	60 S	11.1282	5
	120/80	MC 25	TL	60 S	11.51282	9
	130/80	CT 224	TL	64 T	11.1281	5
	130/80	MC 25	TL	64 P	11.51281	9
	90/90	MC 4	TL	48 P	11.5112810	6
110/90	MC 7	TT	59 P	11.5105	7	
17"	2.00	CT 087	TT	33 J	11.1040	3
	2 1/4	CT 099	TT/TL	39 J	11.1051	3
	130/70	MC 25	TL	62 R	11.5108	9
	90/80	MC 18	TL	46 P	11.51120	8
	110/80	MC 18	TL	57 P	11.51131	8
18"	2 1/4	B 4	TT	30 J	11.51040	6

### Pneumatici moto cross - mini cross - trial - enduro on/off road

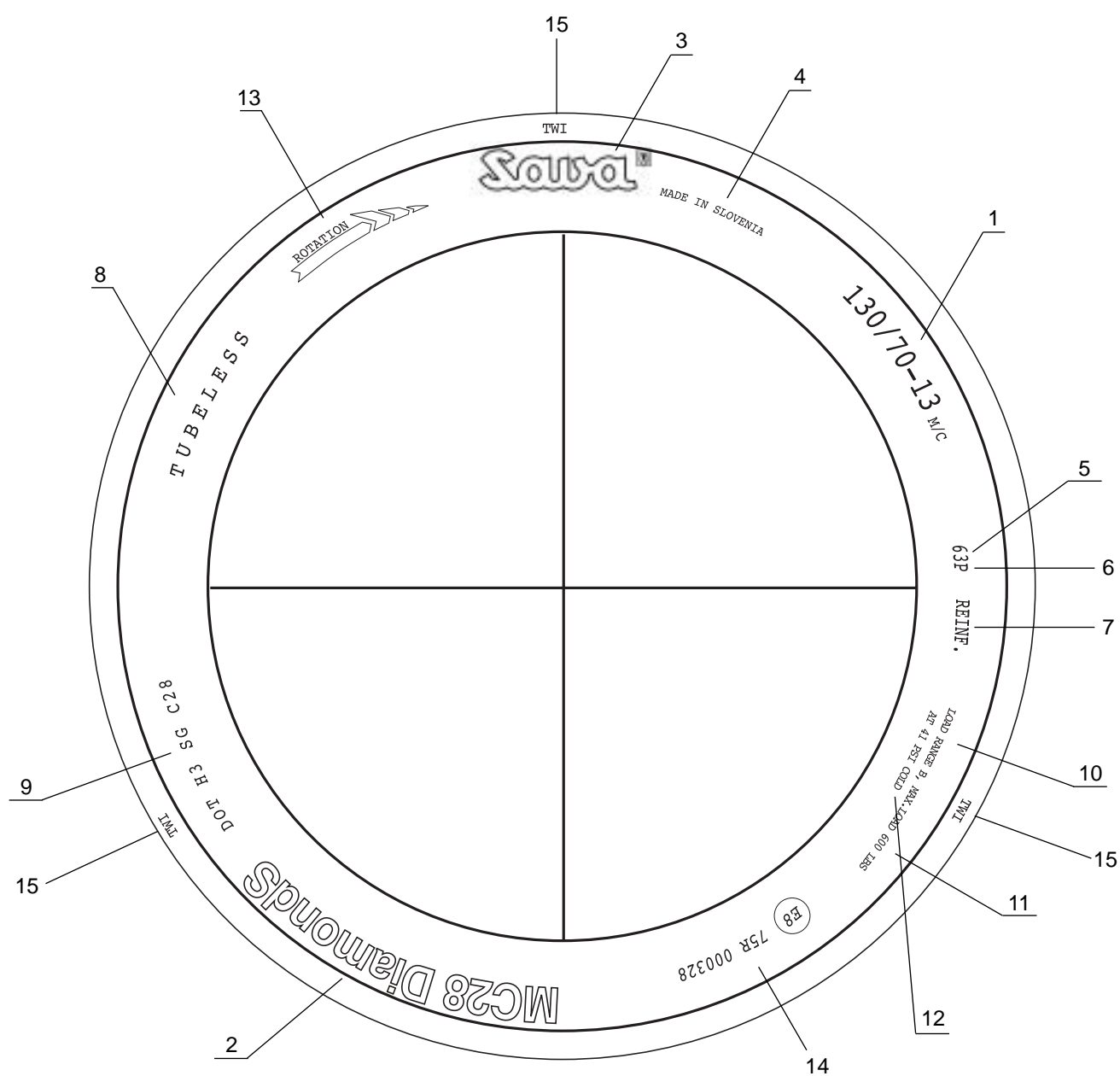
10"	2.50	CT 140 F	TT	33 J	11.1601	10
	2.50	CT 270	TT	32 J	11.1640	12
	2.75	CT 271	TT	37 J	11.1651	12

<i>Diametro</i>	<i>Misura</i>	<i>Disegno battistrada</i>	<i>TT/TL</i>	<i>Car./Vel.</i>	<i>Cod. SGR</i>	<i>Pag. fig.</i>
12"	2.50	CT 270	TT	42 J	11.1642	12
	3.00	CT 174	TT		11.1622	11
	80/100	CT 140 R	TT	41 M	11.1605	11
	80/100	CT 273	TT	41 M	11.1672	12
14"	2.50	CT 174	TT		11.1625	11
	60/100	CT 272	TT	29 M	11.1664	12
	80/100	CT 140 R	TT	49 M	11.1608	11
	90/100	CT 300 R	TT	49 M	11.1684	12
15"	2.50	CT 174	TT		11.1628	11
16"	90/100	CT 140 R	TT	51 M	11.1612	11
17"	70/100	CT 140 F	TT	40 M	11.1615	10
18"	3.25	CT 021	TT	59 R	11.1233	10
	3.50	CT 109 R	TT	62 P	11.1172	10
	4.00	CT 109 R	TT	64 P	11.1173	10
	4.50	CT 109 R	TT	72 P	11.1183	10
	110/80	MC 23	TT	58 P	11.512210	12
	140/80	CT 175 R	TT	70 R	11.1205	11
	140/80	CT 211 R	TT	70 R	11.1207	11
	140/80	MC 33	TT	70 R	11.51207	12
	120/90	CT 147	TT	65 L	11.1193	11
	120/90	CT 211 R	TT	65 R	11.1206	11
	100/100	CT 140 R	TT	59 M	11.1192	11
	110/100	CT 140 R	TT	64 M	11.1199	11
	110/100	CT 200 R	TT	64 M	11.1209	11
	120/100	CT 140 R	TT	68 M	11.1202	11
19"	100/90	CT 140 R	TT	57 M	11.1194	11
	100/90	CT 200 R	TT	57 M	11.1174	11
	110/90	CT 200 R	TT	62 M	11.1176	11
	120/90	CT 140 R	TT	66 M	11.1203	11
	70/100	CT 140 R	TT	42 M	11.1618	11
21"	3.00	CT 109 F	TT	51 R	11.1163	10
	80/90	MC 23	TT	48 P	11.512230	12
	90/90	CT 211 F	TT	54 R	11.1208	11
	90/90	MC 24	TT	54 R	11.512200	12
	90/90	MC 33	TT	54 R	11.51208	12
	80/100	CT 140 F	TT	51 M	11.1195	10
	80/100	CT 200 F	TT	51 M	11.1175	11

<i>Diametro</i>	<i>Misura</i>	<i>Disegno battistrada</i>	<i>TT/TL</i>	<i>Mescola</i>	<i>Cod. SGR</i>	<i>Pag. fig.</i>
5"	10 x 4.00	RACING - SRW/Rain	TT	supermorbida	11.55401	13
	10 x 4.50	SLICK - SRE/Noleggio	TT	dura	11.55456	13
	10 x 4.50	SLICK - SRC/Noleggio	TT	media	11.55455	13
	11 x 6.00	RACING - SRW/Rain	TT	supermorbida	11.55601	13
	11 x 6.00	SLICK - SRE/Noleggio	TT	dura	11.55606	13
	11 x 6.00	SLICK - SRC/Noleggio	TT	media	11.55605	13
	11 x 7.10	SLICK - SRE/Noleggio	TT	dura	11.55716	13
	11 x 7.10	SLICK - SRC/Noleggio	TT	media	11.55715	13

**Pneumatici kart**

## Indicazioni presenti sul pneumatico



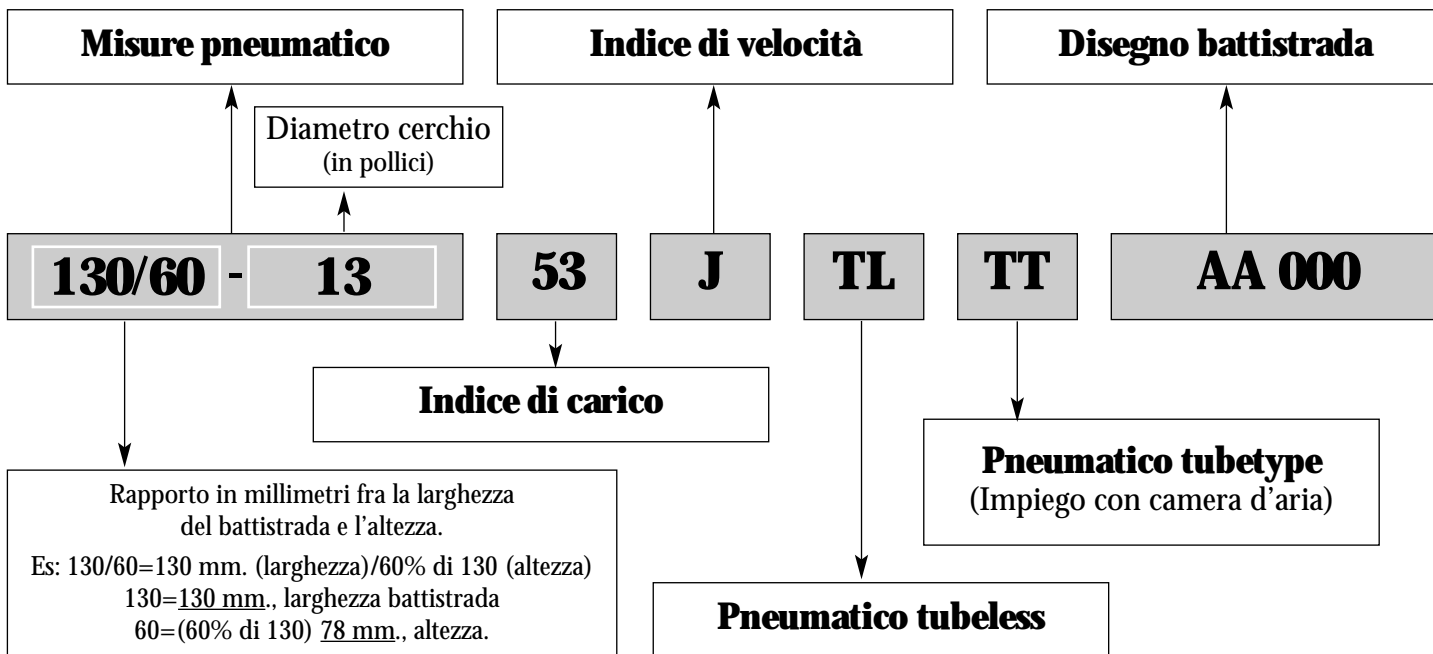
- |   |                                       |
|---|---------------------------------------|
| 1. Misure pneumatico  | 9. Marcatura DOT (USA)                |
| 2. Modello  | 10. Gamma di carico                   |
| 3. Produttore (marca)   | 11. Capacità massima di carico        |
| 4. Nazione di origine   | 12. Pressione massima consentita      |
| 5. Indice di carico   | 13. Indicatore del senso di rotazione |
| 6. Indice di velocità   | 14. Omologazione                      |
| 7. Indicazione di pneumatico rinforzato   | 15. Indicatore di usura               |
| 8. Indicazione di utilizzo camera d'aria:<br>tubeless/TL = senza camera d'aria<br>tubetype/TT = con camera d'aria |                                       |

## Note tecniche pneumatici

### ▲ IMPORTANTE:

È vietato montare un indice di velocità inferiore a quello dei pneumatici montati in origine sul veicolo o a quello raccomandato dal costruttore. In compenso, è possibile montare un indice di velocità superiore.

È importante ricordare come il montaggio di pneumatici non adatti al proprio veicolo può comportare, in caso di controllo, una multa dell'ammontare minimo di 370 (fino ad oltre 1.400) e il ritiro della carta di circolazione (libretto).



## INDICE DI CARICO

(Portata massima)

I.C.	KG	I.C.	KG	I.C.	KG	I.C.	KG
0	45,0	31	109,0	62	265,0	93	650,0
1	46,2	32	112,0	63	257,0	94	670,0
2	47,5	33	115,0	64	280,0	95	690,0
3	48,7	34	118,0	65	290,0	96	710,0
4	50,0	35	121,0	66	300,0	97	730,0
5	51,5	36	125,0	67	307,0	98	750,0
6	53,0	37	128,0	68	315,0	99	775,0
7	54,5	38	132,0	69	325,0	100	800,0
8	56,0	39	136,0	70	335,0	101	825,0
9	58,0	40	140,0	71	345,0	102	850,0
10	60,0	41	145,0	72	355,0	103	875,0
11	61,5	42	150,0	73	365,0	104	900,0
12	63,0	43	155,0	74	375,0	105	925,0
13	65,0	44	160,0	75	387,0	106	950,0
14	67,0	45	165,0	76	400,0	107	975,0
15	69,0	46	170,0	77	412,0	108	1.000,0
16	71,0	47	175,0	78	425,0	109	1.030,0
17	73,0	48	180,0	79	437,0	110	1.060,0
18	75,0	49	185,0	80	450,0	111	1.090,0
19	77,5	50	190,0	81	462,0	112	1.120,0
20	80,0	51	195,0	82	475,0	113	1.150,0
21	82,5	52	200,0	83	487,0	114	1.180,0
22	85,0	53	206,0	84	500,0	115	1.215,0
23	87,5	54	212,0	85	515,0	116	1.250,0
24	90,0	55	218,0	86	530,0	117	1.285,0
25	92,5	56	224,0	87	545,0	118	1.320,0
26	95,0	57	230,0	88	560,0	119	1.360,0
27	97,5	58	236,0	89	580,0		
28	100,0	59	243,0	90	600,0		
29	103,0	60	250,0	91	615,0		
30	106,0	61	257,0	92	630,0		

## INDICE DI VELOCITÀ

(Velocità massima)

Ind. Vel.	Km/h
A1	5
A2	10
A3	15
A4	20
A5	25
A6	30
A7	35
A8	40
B	50
C	60
D	65
E	70
F	80
G	90
J	100
K	110
L	120
M	130
N	140
P	150
Q	160
R	170
S	180
T	190
U	200
H	210
V	240
X	270
Y	300